



The Leading Manufacturer of Premium Detention Hardware & Accessories

TABLE OF CONTENTS

Introduction	1
NW SecurityBar™	2
NW Door Pulls	4
NW Security Mirrors	7
NW Mirror Backplate	11
NW Door Stops	12
NW 607 Anti-Ligature Clothes Hooks	14
NW 608 Anti-Ligature Clothes Hooks	16
NW 610 Stainless Steel Seats	21
NW 611 Anti-Ligature Toilet Paper Holders	23
NW 623 Door Position Switches	24
NW 630 3" X 4" Utility Hinges	25
NW 631 3" X 4" Food Pass Hinges	27
NW 645 4 1/2" Stainless Steel Hinges	31
NW 650 5" Heavy-Duty Hinges	34
NW 690 Food Pass / Cuff Port	36
NW Escutcheon & Key Shield	37
NW Security Pin Torx Screws & Bits	38



Northwest Specialty Hardware, Inc.
15865 SE 114th Avenue, Suite C
Clackamas, OR 97015
Phone (503) 557-1881 Fax (503) 557-1885 Email: sales@northwestsh.com

www.northwestsh.com



The Leading Manufacturer of Premium Detention Hardware & Accessories

INTRODUCTION TO NORTHWEST

Thank you for considering Northwest Specialty Hardware Inc. as a supplier for your detention hardware and accessory needs.

Founded in 2002, Northwest Specialty Hardware Inc. has become the leading manufacturer of premium detention hardware and accessories in North America. Northwest has established a very high reputation and customer satisfaction in the detention industry due to our premium quality, immediate availability, conscientious customer service and competitive pricing.

All Northwest products are designed and manufactured to meet or exceed the detention industry standards. Northwest adopts our unique processing technology and cutting edge technique to manufacture NW 645 4-1/2" hinges, and it supports tight tolerances for internal components and mating parts. NW 645 series hinges have superior wear, durability, and long life.

NW 645 FMST hinge was tested by an independent laboratory and passed ASTM F1758-03 Grade 1 Test. NW 645 series hinges are superior to other brand hinges in the cycle, impact and overloading performance. NW 645 series hinges dominate the sales market in the detention industry.

Northwest is dedicated to design and manufacture the suicide-resistant products, especially bathroom accessories, in order to minimize the risk of patient suicide in psychiatric wards, mental health facilities, and correctional facilities. Northwest bathroom accessories meet the suicide-resistant requirements of ADAAG (Americans with Disabilities Act Accessibility Guidelines) Section 12 and NAPHS (The National Association of Psychiatric Health Systems) Design Guide.

Northwest has been devoting the great efforts to manufacturing, marketing and distributing NW SecurityBar™ since 2003. With our consistent and devoted efforts, Northwest has achieved the high popularity and customer satisfaction in the behavioral healthcare and correctional industry. NW SecurityBar™ with end caps eliminate ligature attachment points and space for hiding items. NW SecurityBar™ possesses the cost and differentiation competitive advantages.



Northwest Specialty Hardware, Inc.
15865 SE 114th Avenue, Suite C
Clackamas, OR 97015
Phone (503) 557-1881 Fax (503) 557-1885 Email: sales@northwestsh.com

www.northwestsh.com

The Leading Manufacturer of Premium Detention Hardware & Accessories



NW SecurityBar™ *for Correctional and Healthcare Facilities*

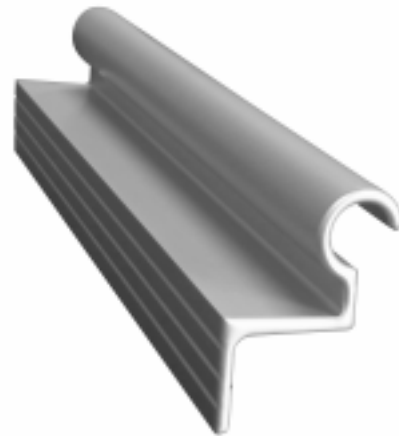
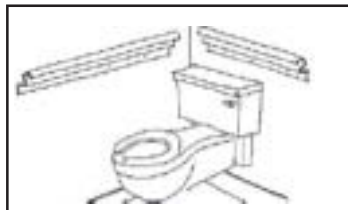
Eliminating Ligature Attachment Points & Space for Hiding Items

OUTSTANDING FEATURES

- Required by ADAAG Section 12 and NAPHS Design Guide
- Suicide Resistant, No Space Between Wall & Bar
- End Caps for Anti-Ligature Solution
- The Handrail to Allow Full Grip
- Self-Draining for Wet Applications
- Open for Contraband Inspection
- Variable Fastener Spacing for Easy Retrofits
- Suitable for Continuous Handrailings
- Custom Lengths or L-Corner Bars Available
- 100% Made in the U.S.A.



Made in USA



Northwest Specialty Hardware, Inc.
15865 SE 114th Avenue, Suite C
Clackamas, OR 97015
Phone (503) 557-1881 Fax (503) 557-1885 Email: sales@northwestsh.com

www.northwestsh.com

NW SecurityBar™ Description

Application: For installation in toilet rooms, shower stalls, at bathtubs, and at other locations required to have NW SecurityBar™ to provide assistance for persons with disabilities or mobility impairment. The unique design meets the suicide resistant or anti-ligature requirements of ADAAG (Americans with Disabilities Act Accessibility Guidelines), and NAPHS (The National Association of Psychiatric Health Systems). The one piece design resists abuse and does not offer a place to conceal contraband. To facilitate retrofit installations, NW SecurityBar™ is not pre-drilled for fasteners and offers a continuous mounting surface. This allows adaptation to a variety of mounting conditions where backing, which is critical for proper attachment, may not align with conventional grab bar mounting points. These features make SecurityBar™ well suited for secure facilities such as Behavioral Health Facilities, Hospitals, Juvenile Detention Facilities, Jails and Prisons.

Materials: NW SecurityBar™ is extruded from 6063-T5 aluminum alloy and receive a special treatment providing a clear anodized surface. All edges are radiused and carefully finished.

Available Sizes: NW SecurityBar™ is available from stock in straight lengths of 18", 24", 30", 36", 42", 48", 54" and 60". Custom lengths or L-Corner bars are available on special orders.

Competitive Advantages: (1) Cost Advantage Northwest is the leading manufacturer of premium detention hardware and accessories. Northwest utilizes our resources and capabilities to create an unsurpassable cost advantage but still maintain the premium quality of SecurityBar™. Further savings are achieved by taking full advantage of the purchase combination of NW SecurityBar™ and our entire product line for secure facilities.

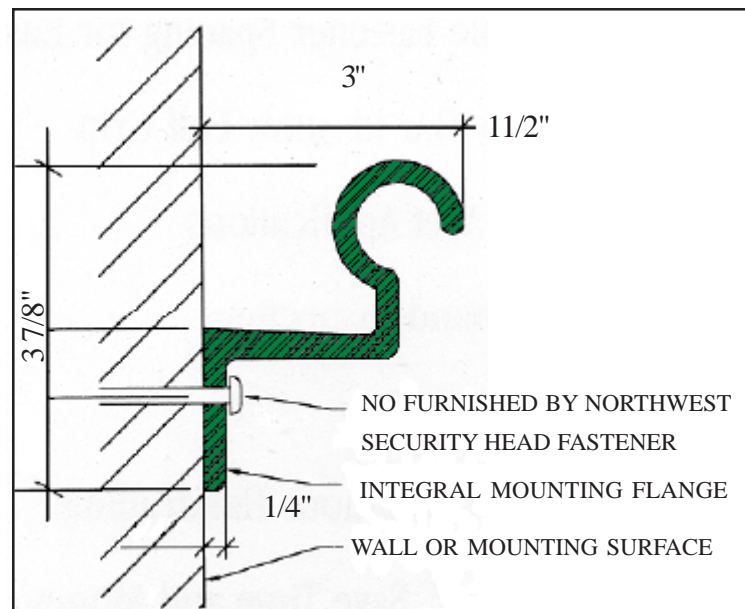
(2) Manufacturing and Marketing Experience Northwest has been devoting great efforts to manufacturing, marketing and distributing NW SecurityBar™ since 2003. With our consistent and devoted efforts, Northwest has achieved the high popularity and customer satisfaction in behavioral healthcare and correctional industry.

(3) Nationwide Delivery Network Northwest has an integrated and nationwide delivery network across North America. Northwest can provide reliable and cost-effective delivery solutions to meet the needs of a wide range of customers and markets.

Installation:

1. Determine installation height and location. Locate appropriate backing locations and transfer layout to NW SecurityBar™. Drill holes 1/32" larger than fastener diameter, 3/4" from bottom of the mounting flange.
2. Before securing bar to wall apply a continuous bead of acrylic latex sealant to back of mounting flange, both top and bottom. Secure to wall and wipe away any excess sealant with a moist cloth.
(Note: For security applications epoxy sealant is recommended.)

Maintenance: Normal cleaning with a dry cloth or non-acidic detergent is applied to NW SecurityBar™ maintenance.



To Specify: NW SecurityBar™ shall be manufactured and distributed by Northwest Specialty Hardware Inc. Special one piece configuration.

1. Material: Extruded 6063-T5 aluminum alloy.
2. Finish: Clear anodized surface with brush finish look.
3. Sizes: Reference drawings for lengths and configurations.
4. All exposed edges rounded and finished.
5. End Cap Option: Provide factory installed End Caps. End Caps are recommended for anti-ligature. Standard or Self-Draining End Caps are available upon request.



The Leading Manufacturer of Premium Detention Hardware & Accessories

NW 601

RAISED PULL

Size: 9" long x 2 3/16" Projection
Material: Stainless Steel, Investment Cast
Style: Raised (Loop)
Finish: US32D
Mounting Screws: Security Oval Hd, 3/8-16 x 3/4"

Note: Also available in US4 finish or investment cast brass. (NW601 Raised Pull, Brass)



Northwest Specialty Hardware, Inc.
15865 SE 114th Avenue, Suite C
Clackamas, OR 97015
Phone (503) 557-1881 Fax (503) 557-1885 Email: sales@northwestsh.com

www.northwestsh.com




The Leading Manufacturer of Premium Detention Hardware & Accessories

NW 602

RECESSED PULL

Size: 4" x 5" x 1" Deep
Material: Stainless Steel, Investment Cast
Style: Recessed (Flush)
Finish: US32D
Mounting Screws: Security Flat Hd, 1/4-20 x 1/2"



Northwest Specialty Hardware, Inc.
15865 SE 114th Avenue, Suite C
Clackamas, OR 97015
Phone (503) 557-1881 Fax (503) 557-1885 Email: sales@northwestsh.com

www.northwestsh.com

NW 603

KNOB PULL


Size: 2 1/4" Dia Knob,
3 1/4" Dia Base,
2 1/4" Projection

Material: Stainless Steel

Style: Knob

Finish: US32D

Mounting Screws: Security Flat Hd,
10-24 x 1/2"



Northwest Specialty Hardware, Inc.
15865 SE 114th Avenue, Suite C
Clackamas, OR 97015
Phone (503) 557-1881 Fax (503) 557-1885 Email: sales@northwestsh.com




The Leading Manufacturer of Premium Detention Hardware & Accessories

NW 604-1

SMALL 1pc SECURITY MIRROR

- Size:** 9 1/2" x 11 1/4" x 1/4" Overall
w/8" x 9 3/4" Mirror Surface
- Material:** 18 ga Stainless Steel Sheet
Polished to a Mirror Finish
Approximating that of Glass
- Style:** 1 pc Mirror
- Mounting Screws:** Security Button Hd, 1/4-20 x 3/8"

Note: Anchor kit and mirror backplate are available upon request.



Northwest Specialty Hardware, Inc.
15865 SE 114th Avenue, Suite C
Clackamas, OR 97015
Phone (503) 557-1881 Fax (503) 557-1885 Email: sales@northwestsh.com

www.northwestsh.com



The Leading Manufacturer of Premium Detention Hardware & Accessories

NW 604-2

SMALL 2pc SECURITY MIRROR

- Size:** 10" x 11 1/2" x 5/16" Frame
w/8" x 9 1/2" Mirror Surface
- Frame:** 14 ga Steel w/Satin Chrome Finish
- Mirror Panel:** 20 ga Stainless Steel Sheet
Polished to a Mirror Finish
Approximating that of Glass
- Style:** 2 pc Mirror
- Mounting Screws:** Security Flat Hd, 1/4-20 x 1/2"

Note: Anchor kit and mirror backplate are available upon request.



Northwest Specialty Hardware, Inc.
15865 SE 114th Avenue, Suite C
Clackamas, OR 97015
Phone (503) 557-1881 Fax (503) 557-1885 Email: sales@northwestsh.com

www.northwestsh.com



The Leading Manufacturer of Premium Detention Hardware & Accessories

NW 605-1

LARGE 1pc SECURITY MIRROR

- Size:** 11 1/4" x 17 1/4" x 1/4" Overall,
w/ 9 3/4" x 15 3/4" Mirror Surface
- Material:** 18 ga Stainless Steel Sheet
Polished to a Mirror Finish
Approximating that of Glass
- Style:** 1 pc Mirror
- Mounting Screws:** Security Button Hd, 1/4-20 x 3/8"

Note: Anchor kit and mirror backplate are available upon request.



Northwest Specialty Hardware, Inc.
15865 SE 114th Avenue, Suite C
Clackamas, OR 97015
Phone (503) 557-1881 Fax (503) 557-1885 Email: sales@northwestsh.com

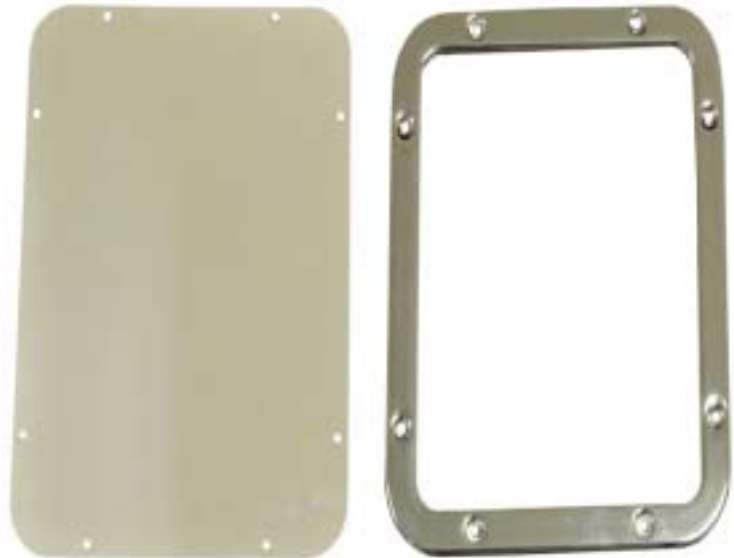
www.northwestsh.com

NW 605-2

LARGE 2pc SECURITY MIRROR

Size:	12 3/8" x 16 3/8" x 5/16" Frame w/10" x 14" Mirror Surface
Frame:	14 ga Steel w/Satin Chrome Finish
Mirror Panel:	20 ga Stainless Steel Sheet Polished to a Mirror Finish Approximating that of Glass
Style:	2 pc Mirror
Mounting Screws:	Security Flat Hd, 1/4-20 x 1/2"

Note: Anchor kit and mirror backplate are available upon request



Northwest Specialty Hardware, Inc.
15865 SE 114th Avenue, Suite C
Clackamas, OR 97015
Phone (503) 557-1881 Fax (503) 557-1885 Email: sales@northwestsh.com

NW MIRROR BACKPLATE

For use in easy-and-substantial mirror installation or retrofit application.

Material: Mild Steel Plate, 3/16" thk
Size: Mirror Backplate Sizes with Matching
NW 604-1, NW 604-2, NW 605-1, NW 605-2
Mounting: Concrete Expansion, Anchor, or Weld On.
Finish: Red Oxide Primer


*Note: Discount price for one complete set of
the mirror, backplate, and anchor kit.*



NW 604-1
MIRROR BACKPLATE



NW 605-1
MIRROR BACKPLATE



Northwest Specialty Hardware, Inc.
15865 SE 114th Avenue, Suite C
Clackamas, OR 97015
Phone (503) 557-1881 Fax (503) 557-1885 Email: sales@northwestsh.com



The Leading Manufacturer of Premium Detention Hardware & Accessories

NW 606

DETENTION DOOR STOP

Size:	2" Dia. x 3 1/2" Bumper 5/8-11 x 2 1/2" Post
Material:	Silicone Rubber Body w/Threaded Steel Post
Style:	Heavy-Duty Floor or Wall Mount
Finish:	Black
Mounting:	Embed in Concrete or Masonry



Northwest Specialty Hardware, Inc.
15865 SE 114th Avenue, Suite C
Clackamas, OR 97015
Phone (503) 557-1881 Fax (503) 557-1885 Email: sales@northwestsh.com

www.northwestsh.com




The Leading Manufacturer of Premium Detention Hardware & Accessories

NW 606S

DETENTION DOOR STOP, SHORT

Size:	2" Dia. x 1 1/2" Bumper 5/8-11 x 2 1/2" Post
Material:	Silicone Rubber Body w/Threaded Steel Post
Style:	Heavy-Duty Wall or Floor Mount
Finish:	Black
Mounting:	Embed in Concrete or Masonry



Northwest Specialty Hardware, Inc.
15865 SE 114th Avenue, Suite C
Clackamas, OR 97015
Phone (503) 557-1881 Fax (503) 557-1885 Email: sales@northwestsh.com

www.northwestsh.com




The Leading Manufacturer of Premium Detention Hardware & Accessories

NW 607B

CLOTHES HOOK, BOLT-ON

Size: 5/8" x 4 5/16" x 3" Projection
Material: Stainless Steel
Style: Bolt-on, Collapsible
Finish: US32D
Mounting Screws: Security Button Hd, 1/4-20 x 1"




Northwest Specialty Hardware, Inc.
15865 SE 114th Avenue, Suite C
Clackamas, OR 97015
Phone (503) 557-1881 Fax (503) 557-1885 Email: sales@northwestsh.com

www.northwestsh.com

NW 607W

CLOTHES HOOK, WELD-ON

Size: 5/8" x 3 1/8" x 3" Projection
Material: Stainless Steel
Style: Weld-on, Collapsible
Finish: US32D
Mounting : Weld-on



Northwest Specialty Hardware, Inc.
15865 SE 114th Avenue, Suite C
Clackamas, OR 97015
Phone (503) 557-1881 Fax (503) 557-1885 Email: sales@northwestsh.com




The Leading Manufacturer of Premium Detention Hardware & Accessories

NW 608

CLOTHES HOOK

Size: 4" x 4" x 2 1/4" Projection
Material: Stainless Steel w/Nylon Insert
14 ga Slope Top Housing
Style: Front Mounted
Collapsible Ball-Joint
Finish: US32D
Mounting Screws: Security Flat Hd,
1/4-20 x 2"



Northwest Specialty Hardware, Inc.
15865 SE 114th Avenue, Suite C
Clackamas, OR 97015
Phone (503) 557-1881 Fax (503) 557-1885 Email: sales@northwestsh.com

www.northwestsh.com



The Leading Manufacturer of Premium Detention Hardware & Accessories

NW 608-2S

CLOTHES HOOK STRIP, SLOPE TOP

- Size:** 6 1/2" x 9 1/2" x 2 1/4" Projection
Material: Stainless Steel w/Nylon Inserts
14 ga Slope Top Housing
Style: Front Mounted
Collapsible Ball-Joint
Finish: US32D
Mounting Screws: Security Flat Hd
1/4-20 x 2"
Features: Slope top surface is free
from dust and easy-to-clean



Northwest Specialty Hardware, Inc.
15865 SE 114th Avenue, Suite C
Clackamas, OR 97015
Phone (503) 557-1881 Fax (503) 557-1885 Email: sales@northwestsh.com

www.northwestsh.com



The Leading Manufacturer of Premium Detention Hardware & Accessories

NW 608-3S

CLOTHES HOOK STRIP, SLOPE TOP

- Size:** 6 1/2" x 14" x 2 1/4" Projection
Material: Stainless Steel w/Nylon Inserts
14 ga Slope Top Housing
Style: Front Mounted
Collapsible Ball-Joint
Finish: US32D
Mounting Screws: Security Flat Hd
1/4-20 x 2"
Features: Slope top surface is free
from dust and easy-to-clean



Northwest Specialty Hardware, Inc.
15865 SE 114th Avenue, Suite C
Clackamas, OR 97015
Phone (503) 557-1881 Fax (503) 557-1885 Email: sales@northwestsh.com

www.northwestsh.com




The Leading Manufacturer of Premium Detention Hardware & Accessories

NW 608-4S

CLOTHES HOOK STRIP, SLOPE TOP

Size:	6 1/2" x 18" x 2 1/4" Projection
Material:	Stainless Steel w/Nylon Inserts 14 ga Slope Top Housing
Style:	Front Mounted Collapsible Ball-Joint
Finish:	US32D
Mounting Screws:	Security Flat Hd 1/4-20 x 2"
Features:	Slope top surface is free from dust and easy-to-clean



Northwest Specialty Hardware, Inc.
15865 SE 114th Avenue, Suite C
Clackamas, OR 97015
Phone (503) 557-1881 Fax (503) 557-1885 Email: sales@northwestsh.com

www.northwestsh.com



The Leading Manufacturer of Premium Detention Hardware & Accessories

NW 608-4

CLOTHES HOOK STRIP

Size: 5 1/2" x 18" x 2 1/4" Projection
Material: Stainless Steel w/Nylon Inserts
14 ga Flat Top Housing
Style: Front Mounted
Collapsible Ball-Joint
Finish: US32D
Mounting Screws: Security Flat Hd
1/4-20 x 2"



Northwest Specialty Hardware, Inc.
15865 SE 114th Avenue, Suite C
Clackamas, OR 97015
Phone (503) 557-1881 Fax (503) 557-1885 Email: sales@northwestsh.com

www.northwestsh.com




The Leading Manufacturer of Premium Detention Hardware & Accessories

NW 610

STAINLESS STEEL SEAT

Size: 12" Dia x 1 1/2" Lip
Material: 14 ga Stainless Steel Seat
With 9 Gauge Mild Steel
Reinforcement Plate
Finish: US32D
Application: For use in Construction of
Detention Furnishings such as
Stools, Desks and Pedestal Tables



Northwest Specialty Hardware, Inc.
15865 SE 114th Avenue, Suite C
Clackamas, OR 97015
Phone (503) 557-1881 Fax (503) 557-1885 Email: sales@northwestsh.com

www.northwestsh.com



The Leading Manufacturer of Premium Detention Hardware & Accessories

NW 610 BoltOnSeat™

- Features:** The Only Bolt-on Seat in Detention Industry; Applicable to all the Detention Stools, Pedestal Table, or Retrofit Assembly; Cost-saving and Easy to Install or Maintain.
- Seat Size:** 12" Dia x 1 1/2" Lip
- Seat Material:** 14 Gauge Stainless Steel Seat with 9 Gauge Mild Steel Fully Welded Plate
- Seat Finish:** US32D
- Pedestal Size:** 18" High, 6" x 6" Top Plate, 8" x 8" Mounting Plate
- Pedestal Material:** 2" Schedule 40 Pipe, 9 Gauge Mild Steel Mounting Plate
- Pedestal Finish:** USP (Prime Painted)
- Mounting Hardware:** Security Flat Hd, 1/4-2 x 1/2"
Secure Bolt, 3/8 x 2 1/2 BH Concrete Expansion Anchor

*Option: NW 610 BoltOnSeat™ w/Pedestal, or BoltOnSeat™ w/Top Plate
Available upon Request.*



Northwest Specialty Hardware, Inc.
15865 SE 114th Avenue, Suite C
Clackamas, OR 97015
Phone (503) 557-1881 Fax (503) 557-1885 Email: sales@northwestsh.com

www.northwestsh.com

NW 611

BALL TIP, TOILET PAPER HOLDER

Size:	4" x 4" x 4" Projection
Material:	Stainless Steel w/Nylon Insert 14 ga Slope Top Housing
Style:	Front Mounted Collapsible Ball-Joint Ball Tip Lever
Finish:	US32D
Mounting Screws:	Security Flat Hd, 1/4-20 x 2"
Features:	For holding toilet paper Anti-Ligature Design conveniently and easily surface-mounted on wall




NW 611, Ball Tip



NW 611, Flat Tip

Note: NW 611 with Flat Tip Lever also Available



Northwest Specialty Hardware, Inc.
15865 SE 114th Avenue, Suite C
Clackamas, OR 97015
Phone (503) 557-1881 Fax (503) 557-1885 Email: sales@northwestsh.com

NW 623

DOOR POSITION SWITCH, RIGHT-HANDED

Size:	1 1/4" x 4 1/2" x 1 1/2"
Material:	10 ga Steel Cover, Steel Components Plated For Corrosion Resistance
Style:	Mechanical DPS, Frame Mounted
Switch:	Heavy Duty, ULListed
Mounting Screws:	Security Flat Hd, 1/4 -20 x 2"
Features:	Compact, fits standard 2" frame header Compatible with 180 degree door swing Fully adjustable Use in medium to maximum security locations



Note: Also available in left-handed (NW 623, LEFT-HANDED)

NW 623 is a compact, mechanical Door Position Switch designed to monitor the status of security swing-doors. When wired in series with the latchbolt status switch of an electric or pneumatic security lock, NW 623 provides a means to determine door secure status. Secure indication is given only when door is both closed and locked.



Northwest Specialty Hardware, Inc.
15865 SE 114th Avenue, Suite C
Clackamas, OR 97015
Phone (503) 557-1881 Fax (503) 557-1885 Email: sales@northwestsh.com

NW 630B

3" x 4" UTILITY HINGE, BOLT-ON

Size:	3" x 4" x 1/4" Thick
Material:	Formed Steel Plate
Style:	Full Surface, Bolt-on w/o C'Sinks
Pin:	Fully Welded
Ends:	Welded and Ground to Appear Solid
Bearing:	Plain Bearing
Finish:	USP (prime painted)
Mounting Screws:	Security Button Hd, 3/8-16 x 1"

Note: Also available with countersunk holes for flat head screws 3/8-16 x 3/4" (NW 630BCS), and without C'sinks Stainless Steel (NW630BS), and with C'sinks Stainless Steel (NW630BCSS).



NW 630B



NW 630BCSS



NW 630BCS



Northwest Specialty Hardware, Inc.
15865 SE 114th Avenue, Suite C
Clackamas, OR 97015
Phone (503) 557-1881 Fax (503) 557-1885 Email: sales@northwestsh.com

NW 630W

3" x 4" UTILITY HINGE, WELD-ON

Size:	3" x 4" x 1/4" Thick
Material:	Formed Steel Plate
Style:	Full Surface, Weld-on
Pin:	Fully Welded
Ends:	Welded and Ground to Appear Solid
Bearing:	Plain Bearing
Finish:	USP (prime painted)
Mounting:	Weld -on




NW 630W

*Note: Also available with both short leaf hinge
3" x 3 1/4" x 1/4" thick (NW 630WSL),
and weld-on hinge without paint (NW 630WNP).*



NW 630WSL



Northwest Specialty Hardware, Inc.
15865 SE 114th Avenue, Suite C
Clackamas, OR 97015
Phone (503) 557-1881 Fax (503) 557-1885 Email: sales@northwestsh.com



The Leading Manufacturer of Premium Detention Hardware & Accessories

NW 631FP

FOOD PASS HINGE W/APPLIED STOP

Size: 3" x 4" x 1/4" Thick
3/16" Thick Stop

Material: Formed Steel Plate

Style: Full Surface, Bolt-on


Pin: Fully Welded

Ends: Welded and Ground
to Appear Solid

Bearings: Plain Bearing

Finish: USP (prime painted)

Mounting Screws: Security Button Hd, 3/8-16 x 1"



Northwest Specialty Hardware, Inc.
15865 SE 114th Avenue, Suite C
Clackamas, OR 97015
Phone (503) 557-1881 Fax (503) 557-1885 Email: sales@northwestsh.com

www.northwestsh.com

NW 631FPB


FOOD PASS HINGE, BOLT-ON

Size:	3" x 4" x 1/4" Thick
Material:	Formed Steel Plate
Style:	Full Surface, Bolt-on
Pin:	Fully Welded
Ends:	Welded and Ground to Appear Solid
Bearing:	Plain Bearing
Finish:	USP (prime painted)
Mounting Screws:	Security Flat Hd, 3/8-16 x 3/4"



NW631 FPB

*Note: Also available in stainless steel, US32D Finish
(NW 631FPBS)*



Northwest Specialty Hardware, Inc.
15865 SE 114th Avenue, Suite C
Clackamas, OR 97015
Phone (503) 557-1881 Fax (503) 557-1885 Email: sales@northwestsh.com


NW 631FPBS

FOOD PASS HINGE, BOLT-ON

Size: 3" x 4" x 1/4" Thick
Material: Stainless Steel Plate
Style: Full Surface, Bolt-on
Pin: Fully Welded
Ends: Welded and Ground
to Appear Solid
Bearing: Plain Bearing
Finish: US32D
Mounting Screws: Security Flat Hd, 3/8-16 x 3/4"



NW631 FPBS



Northwest Specialty Hardware, Inc.
15865 SE 114th Avenue, Suite C
Clackamas, OR 97015
Phone (503) 557-1881 Fax (503) 557-1885 Email: sales@northwestsh.com




The Leading Manufacturer of Premium Detention Hardware & Accessories

NW 631FPW

FOOD PASS HINGE, WELD-ON

Size: 3" x 4" x 1/4" Thick
Material: Formed Steel Plate
Style: Full Surface, Weld-on
Pin: Fully Welded
Ends: Welded and Ground to Appear Solid
Bearings: Plain Bearing
Finish: USP (prime painted)
Mounting: Weld-on




Northwest Specialty Hardware, Inc.
15865 SE 114th Avenue, Suite C
Clackamas, OR 97015
Phone (503) 557-1881 Fax (503) 557-1885 Email: sales@northwestsh.com

www.northwestsh.com

NW 645FM

STAINLESS STEEL HINGE

Size:	4 1/2" x 4 1/2" x 3/16" Thick
Material:	Stainless Steel, Investment Cast
Style:	Full Mortise, Hospital Tip
Finish:	US32D
Pin:	Stainless Steel, Concealed & Non-Removable
Bearings:	Anti-Friction Bearings, Maintenance-Free
Capacity:	300lb Door (3 Hinges)
Mounting Screws:	Security Flat Hd, 1/4-20 x 1/2"
Template:	ANSI/BHMA A156.7



Northwest Specialty Hardware, Inc.
15865 SE 114th Avenue, Suite C
Clackamas, OR 97015
Phone (503) 557-1881 Fax (503) 557-1885 Email: sales@northwestsh.com


www.northwestsh.com

NW 645FMST STAINLESS STEEL HINGE W/ SECURITY STUD

Size:	4 1/2" x 4 1/2" x 3/16" Thick
Material:	Stainless Steel, Investment Cast
Style:	Full Mortise, Hospital Tip w/ Security Stud
Finish:	US32D
Pin:	Stainless Steel, Concealed & Non-Removable
Bearings:	Anti-Friction Bearings, Maintenance-Free
Capacity:	300lb Door (3 Hinges)
Mounting Screws:	Security Flat Hd, 1/4-20 x 1/2"
Template:	ANSI/BHMA A156.7



Note: NW 645FMST meets and surpasses ASTM F1758-03 Grade 1 criteria. Test results from an independent testing laboratory are available upon request.



Northwest Specialty Hardware, Inc.
15865 SE 114th Avenue, Suite C
Clackamas, OR 97015
Phone (503) 557-1881 Fax (503) 557-1885 Email: sales@northwestsh.com

NW 645ETH

ELECTRIC TRANSFER HINGE

Size:	4 1/2" x 4 1/2" x 3/16" Thick
Material:	Stainless Steel, Investment Cast
Style:	Electric Transfer Hinge Full Mortise, Hospital Tip
Finish:	US32D
Wiring:	Color Coded Wires (5) 18 ga, UL Recognized
Capacity:	Non-Load Bearing
Mounting Screws:	Security Flat Hd, 1/4-20 x 1/2"
Handing:	Non-Handed, Reversible
Template:	ANSI/BHMA A156.7

Note: 6 coded wires are available upon request.



Northwest Specialty Hardware, Inc.
15865 SE 114th Avenue, Suite C
Clackamas, OR 97015
Phone (503) 557-1881 Fax (503) 557-1885 Email: sales@northwestsh.com

NW 650 HEAVY-DUTY HINGE, WELD-ON

Size: 5" x 6" x 1/2" Thick (Full Leaf)
5" x 5" x 1/2" Thick (Short Leaf)

Material: Cold-rolled Steel

Style: Full Surface (FS Series)
Half-surface (HS Series)

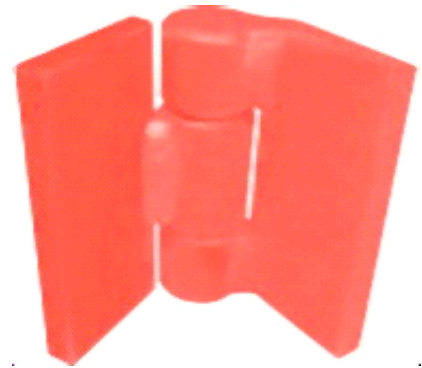
Pin: Hardened Alloy Steel,
Concealed and Non-Removable

Bearing: Heavy-Duty Thrust & Radial Bearings

Capacity: 600 lb. door (2 hinges)

Mounting : Weld-on

Finish: USP (prime painted)



NW 650FSW
FULL SURFACE, WELD-ON



NW 650HSW WITH
SHORT LEAF



NW 650HSW
HALF SURFACE, WELD-ON



NW 650FSW WITH
SHORT LEAF



Northwest Specialty Hardware, Inc.
15865 SE 114th Avenue, Suite C
Clackamas, OR 97015
Phone (503) 557-1881 Fax (503) 557-1885 Email: sales@northwestsh.com

NW 650 HEAVY-DUTY HINGE, BOLT-ON

- Size:** 5" x 5" x 1/2" Thick
(Short Leaf for All Bolt-on Hinges)
- Material:** Cold-rolled Steel
- Style:** Full Surface (FS Series)
Half-surface (HS Series)
- Pin:** Hardened Alloy Steel,
Concealed and Non-Removable
- Bearing:** Heavy-Duty Thrust & Radial Bearings
- Capacity:** 600 lb. door (2 hinges)
- Mounting :** Bolt-on
- Finish:** USP (Prime Painted)



NW 650FSB



NW 650FSB WITH
SPECIAL SHORT LEAF



NW 650FSB WITH
WELD-ON SHORT LEAF



NW 650FSWS
FULL LEAF, STAINLESS STEEL



NW 650FSBS

Northwest Specialty Hardware, Inc.
15865 SE 114th Avenue, Suite C
Clackamas, OR 97015
Phone (503) 557-1881 Fax (503) 557-1885 Email: sales@northwestsh.com



The Leading Manufacturer of Premium Detention Hardware & Accessories

NW 690

FOOD PASS / CUFF PORT RETROFIT ASSEMBLY

For use in Detention Doors where the addition of a Food Pass or Cuff Port is desired.
Applicable to Hollow Metal or Wood Doors.

Features:	Fully Adjustable to fit 1 3/4" or 2" Door Applications. Available in Mechanical Lock or Padlock versions, with or without Locks.
Style:	Food Pass or Cuff Port
Material:	Welded Steel Assembly, 10 ga Frame with 3/16" Door
Hinges:	3" Hinge with 90 degree Stop
Frame Size:	15" H x 21" W
Clear Opening:	6" H x 15" W
Finish:	USP (prime painted)

Note: Custom food pass assembly is available upon request



Northwest Specialty Hardware, Inc.
15865 SE 114th Avenue, Suite C
Clackamas, OR 97015
Phone (503) 557-1881 Fax (503) 557-1885 Email: sales@northwestsh.com

www.northwestsh.com

ESCUTCHEON & KEY SHIELD



NW ESCUTCHEON
SINGLE WING, W/O C'SINKS



NW ESCUTCHEON
SINGLE WING, W/ C'SINKS



NW KEY SHIELD



NW ESCUTCHEON
DOUBLE WING, W/O C'SINKS



NW ESCUTCHEON
DOUBLE WING, W/ C'SINKS




Northwest Specialty Hardware, Inc.
15865 SE 114th Avenue, Suite C
Clackamas, OR 97015
Phone (503) 557-1881 Fax (503) 557-1885 Email: sales@northwestsh.com

www.northwestsh.com

SECURITY PIN TORX SCREWS & BITS

All the security pin torx screws and bits are available upon request.



Northwest Specialty Hardware, Inc.
15865 SE 114th Avenue, Suite C
Clackamas, OR 97015
Phone (503) 557-1881 Fax (503) 557-1885 Email: sales@northwestsh.com

www.northwestsh.com