



The Leading Manufacturer of Premium Detention Hardware & Accessories



NW SecurityBar™ *for Correctional and Healthcare Facilities*

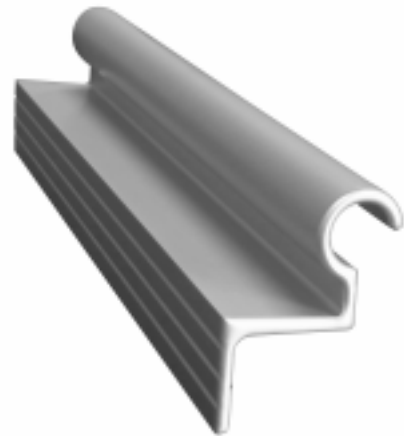
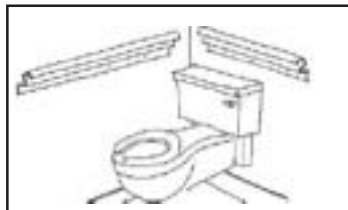
Eliminating Ligature Attachment Points & Space for Hiding Items

OUTSTANDING FEATURES

- Required by ADAAG Section 12 and NAPHS Design Guide
- Suicide Resistant, No Space Between Wall & Bar
- End Caps for Anti-Ligature Solution
- The Handrail to Allow Full Grip
- Self-Draining for Wet Applications
- Open for Contraband Inspection
- Variable Fastener Spacing for Easy Retrofits
- Suitable for Continuous Handrailings
- Custom Lengths or L-Corner Bars Available
- 100% Made in the U.S.A.



Made in USA



Northwest Specialty Hardware, Inc.
15865 SE 114th Avenue, Suite C
Clackamas, OR 97015
Phone (503) 557-1881 Fax (503) 557-1885 Email: sales@northwestsh.com

www.northwestsh.com

NW SecurityBar™ Description

Application: For installation in toilet rooms, shower stalls, at bathtubs, and at other locations required to have NW SecurityBar™ to provide assistance for persons with disabilities or mobility impairment. The unique design meets the suicide resistant or anti-ligature requirements of ADAAG (Americans with Disabilities Act Accessibility Guidelines), and NAPHS (The National Association of Psychiatric Health Systems). The one piece design resists abuse and does not offer a place to conceal contraband. To facilitate retrofit installations, NW SecurityBar™ is not pre-drilled for fasteners and offers a continuous mounting surface. This allows adaptation to a variety of mounting conditions where backing, which is critical for proper attachment, may not align with conventional grab bar mounting points. These features make SecurityBar™ well suited for secure facilities such as Behavioral Health Facilities, Hospitals, Juvenile Detention Facilities, Jails and Prisons.

Materials: NW SecurityBar™ is extruded from 6063-T5 aluminum alloy and receive a special treatment providing a clear anodized surface. All edges are radiused and carefully finished.

Available Sizes: NW SecurityBar™ is available from stock in straight lengths of 18", 24", 30", 36", 42", 48", 54" and 60". Custom lengths or L-Corner bars are available on special orders.

Competitive Advantages: (1) Cost Advantage Northwest is the leading manufacturer of premium detention hardware and accessories. Northwest utilizes our resources and capabilities to create an unsurpassable cost advantage but still maintain the premium quality of SecurityBar™. Further savings are achieved by taking full advantage of the purchase combination of NW SecurityBar™ and our entire product line for secure facilities.

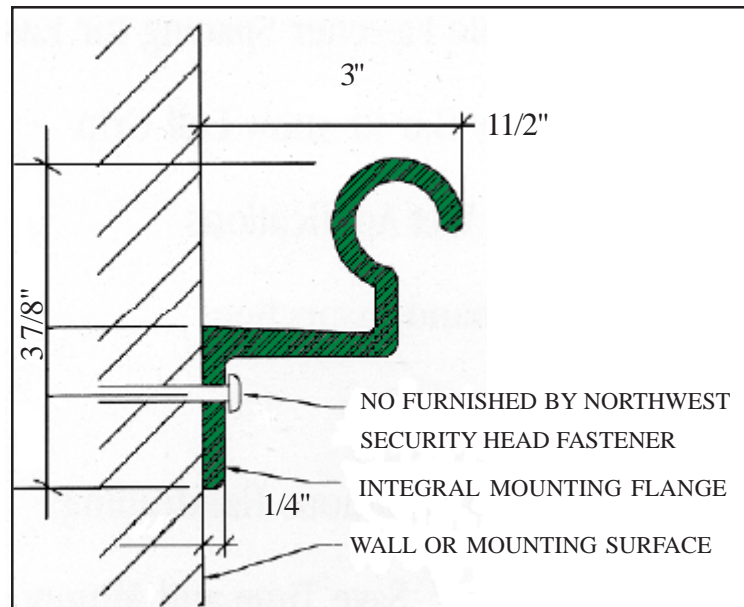
(2) Manufacturing and Marketing Experience Northwest has been devoting great efforts to manufacturing, marketing and distributing NW SecurityBar™ since 2003. With our consistent and devoted efforts, Northwest has achieved the high popularity and customer satisfaction in behavioral healthcare and correctional industry.

(3) Nationwide Delivery Network Northwest has an integrated and nationwide delivery network across North America. Northwest can provide reliable and cost-effective delivery solutions to meet the needs of a wide range of customers and markets.

Installation:

1. Determine installation height and location. Locate appropriate backing locations and transfer layout to NW SecurityBar™. Drill holes 1/32" larger than fastener diameter, 3/4" from bottom of the mounting flange.
2. Before securing bar to wall apply a continuous bead of acrylic latex sealant to back of mounting flange, both top and bottom. Secure to wall and wipe away any excess sealant with a moist cloth.
(Note: For security applications epoxy sealant is recommended.)

Maintenance: Normal cleaning with a dry cloth or non-acidic detergent is applied to NW SecurityBar™ maintenance.



To Specify: NW SecurityBar™ shall be manufactured and distributed by Northwest Specialty Hardware Inc. Special one piece configuration.

1. Material: Extruded 6063-T5 aluminum alloy.
2. Finish: Clear anodized surface with brush finish look.
3. Sizes: Reference drawings for lengths and configurations.
4. All exposed edges rounded and finished.
5. End Cap Option: Provide factory installed End Caps. End Caps are recommended for anti-ligature. Standard or Self-Draining End Caps are available upon request.